

G-BUZZ

Spring 2024 | G-Hive Newsletter | Ed. 7

GLP 

WORLD BEE DAY - 20 MAY 2024

G-HIVE
Natural
Honey

- 🐝 G-Hive is swarming again!
- 🐝 We're celebrating World Bee Day
- 🐝 Spotlight on Central & Eastern Europe
- 🐝 6 species for pollinators to plant this Spring

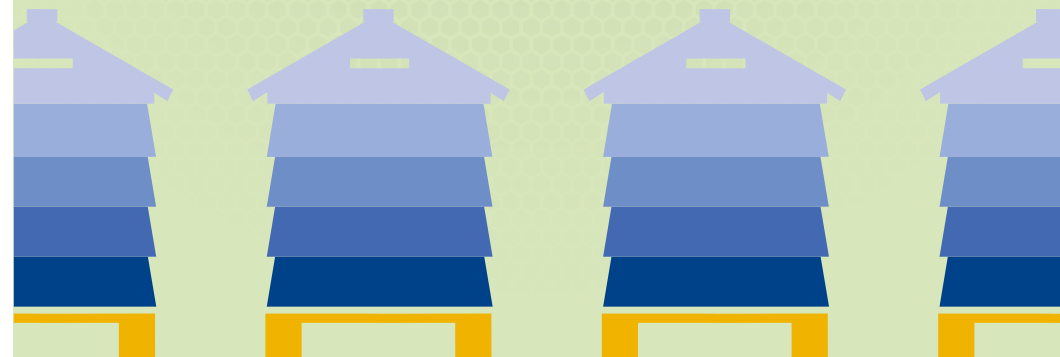
Welcome to a special 'World Bee Day' edition of G-Buzz newsletter where we bring you all the latest developments from GLP's network of honeybee apiaries. Did you know that approximately 75% of crop plants rely on animal pollination to some extent, including a variety of our everyday fruits and vegetables? The economic benefit of pollination to crop production in the UK is approximately £600m each year. Pollination also plays a crucial role in preserving habitats and food sources for our local wildlife. Among all insects, bees are the most effective pollinators - which means they have a tremendously important impact on our local environment.



DID YOU KNOW, GLP UK HAVE BEEN WORKING HARD TO IMPROVE HABITATS FOR POLLINATORS AT MAGNA PARK LUTTERWORTH AND WILL BE PLANTING THEIR VERY OWN ORCHARD AND WILDFLOWER MEADOW? BOTH WILL PROVIDE A WONDERFUL SOURCE OF NECTAR FOR OUR HONEYBEES!

G-Hive is swarming!

GLP has been investing in a network of honeybee apiaries across their UK sites since the beginning of 2019. In the UK GLP now has a total of 32 hives across 7 independent apiaries. In the height of summer this equates to 2 million honeybees! We're proud that our network of apiaries improves biodiversity across our sites and we're excited to be expanding again in 2024 with a new apiary planned at Magna Park Corby later this year. G-Hive France will also be introducing a new four hive apiary site at Autrèche!



We're celebrating WORLD BEE DAY!

We love sharing our knowledge about honeybees and pollinators and teaching the next generation why they are such an integral part of most ecosystems.

As part of our World Bee Day celebrations we'll be hitting the road this spring visiting schools to spread the word about the importance of bees and how we should all be creating and maintaining thriving habitats for our precious pollinators.

IT'S
WORLD
BEE DAY
20TH MAY



SPREAD THE
WORD:
BEES ARE
BRILLIANT!

DID YOU KNOW WE
NEED BEES TO POLLINATE
THE FOOD WE NEED TO
SURVIVE AND MANY OF
THE TREES AND FLOWERS
THAT PROVIDE HABITATS
FOR LOTS OF
OTHER WILDLIFE?

WE'RE
V.I.BEES!

In the UK we will be gifting wildflower seeds to each student and providing pollinator hampers including bee-friendly plants and peat free compost to each school so they can create their own pollinator gardens.

In France, we will be explaining the importance of honeybees and showing how they work within a hive to create delicious honey.





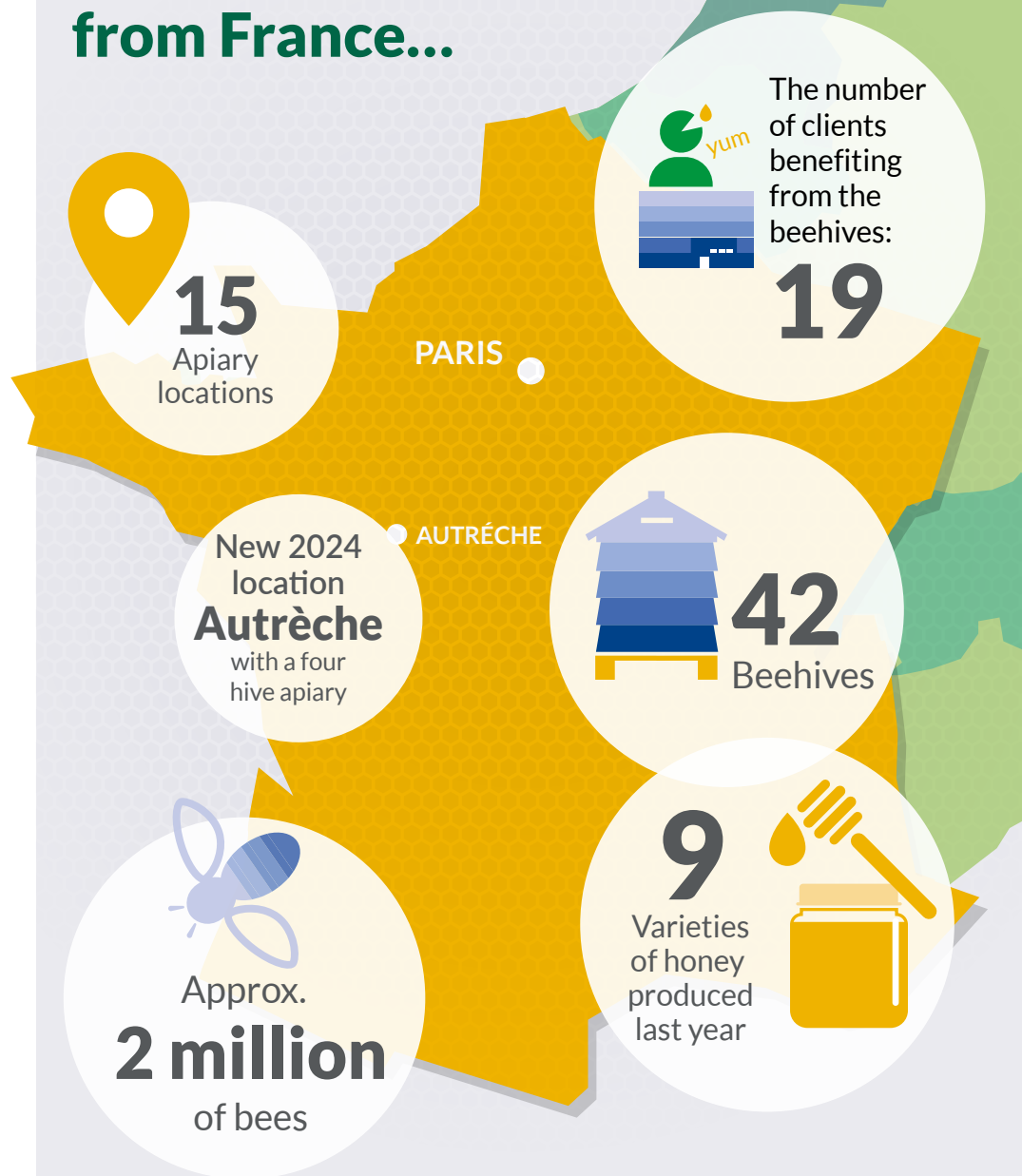
Spotlight on Central & Eastern Europe

During the first weekend of May, a remarkable event took place: new honeybee colonies were created through a process known as layering. This procedure, aimed at enhancing the vitality of our bee colonies, resulted in the reduction of bee population density from approximately 35,000 to 25,000 bees per hive.

But what does this mean for our beloved pollinators? Quite simply, it's all about creating a more comfortable and balanced environment for them. By increasing the number of bee colonies while decreasing population density, we're ensuring that each bee has ample space and resources to thrive.

But our commitment to ecological harmony doesn't stop there. We understand the importance of supporting all pollinators, which is why we've embarked on initiatives such as developing insect hotels at safe distances from our bee hives and planting diverse wildflowers. These efforts contribute to a balanced insect ecosystem, crucial for maintaining biodiversity.

Some of our fabulous figures from France...





6 Bee-friendly species to plant this spring

You don't need to become a beekeeper to help stem declining pollinator numbers. Helping your local bee population is as easy as choosing wisely when selecting plants, flowers and shrubs for your garden! It's important to choose plants which are rich with nectar and pollen to give our little friends a bountiful feeding ground throughout the year. Here are our five top bee-friendly species to plant this spring - whether that be on a balcony, in a garden bed or on a windowsill.

- Cornflower
- Borage
- Phacelia
- Foxglove (Digitalis)
- Allium (Allium sphaerocephalon)
- Catmint (Nepeta)

Top Tips: Plant in groups to create a bee-friendly destination in your garden, choose a sunny, sheltered space...



...and don't forget to keep your plants well-watered in hot, dry weather as this will help them produce more nectar.